



Rabbit anti LRRK2(paired S973) Polyclonal Antibody

Alternative Name(s): leucine-rich repeat kinase 2

Order Information

- **Description:** LRRK2(paired S973)
- **Catalogue:** 630-280
- **Lot:** See label
- **Size:** 100ug/200ul
- **Host:** Rabbit
- **Clone:** nan
- **Application:** IHC(P), WB
- **Reactivity:** Hu, Ms, Rt, Bv

ANTIGEN PREPARATION

A synthetic peptide derived from a non-phosphorylated serine surrounding the epitope -RHSD-S-ISSLA- of human LRRK2. This sequence is identical to human, mouse, rat and bovine.

BACKGROUND

LRRK2, leucine rich repeat kinase 2, belong to the leucine-rich repeat kinase family and encodes a protein with an ankryin repeat region, a leucine-rich repeat (LRR) domain, a kinase domain, a DFG-like motif, a RAS domain, a GTPase domain, a MLK-like domain, and a WD40 domain. The protein is present largely in the cytoplasm but also associates with the mitochondrial outer membrane. Mutations in this gene have been associated with Parkinson disease-8.

PURIFICATION

The Rabbit IgG is purified by Epitope Affinity Purification

FORMULATION

This affinity purified antibody is supplied in sterile Phosphatebuffered saline (pH7.2) containing antibody stabilizer

SPECIFICITY

This antibody recognizes human LRRK2(paired S973) protein without the phosphorylation S973. It cross reacts to human, mice and rat.

STORAGE

The antibodies are stable for 24 months from date of receipt when stored at -20oC to -70oC. The antibodies can be stored at 2oC-8oC for three month without detectable loss of activity. Avoid repeated freezing-thawing cycles.

APPLICATIONS/SUGGESTED WORKING DILUTIONS*

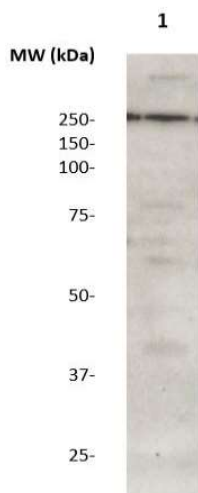
- Western Blot: 0.1-1 µg/ml
- ELISA: 0.01-0.1 µg/ml
- Immunoprecipitation: 2-5 µg/ml
- IHC: 2-10 µg/ml
- Flow cytometry: Not tested
- Molecular Weight: 250.0
- Positive Control: Kidney Tissue
- Cellular Location: Cell Membrane

*Optimal dilutions should be determined by researchers for the specific applications.

FOR RESEARCH USE ONLY.

AbboMax, Inc 2528 Qume Drive, Suite 8, San Jose, California 95131, USA
1 408-573-1898 (Tel). 1 408-573-1858 (Fax). www.abbomax.com info@abbomax.com

DATA ATTACHMENTS



Western Blot: The whole lysate derived from U118MG (20 ug/lane) immunoblotted by Rabbit anti – LRRK2 (paired S973) (Cat# 630-280) at 1:500. Observed a major immunoreactive band at molecular weight >200kDa.

REFERENCES

Jeong GR, Lee BD , Pathological Functions of LRRK2 in Parkinson's Disease. Cells. 2020 Nov 30;9(12):2565

FOR RESEARCH USE ONLY.

AbboMax, Inc 2528 Qume Drive, Suite 8, San Jose, California 95131, USA
1 408-573-1898 (Tel). 1 408-573-1858 (Fax). www.abbomax.com info@abbomax.com